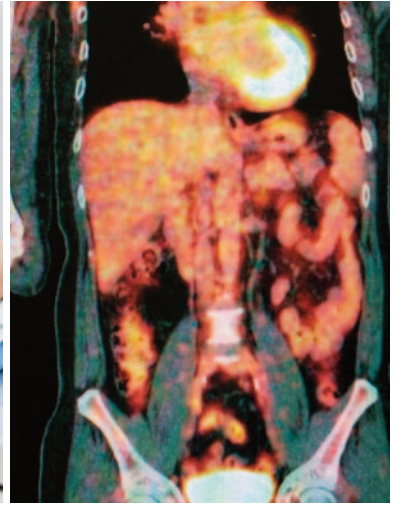


# Innovative CT Generator Solutions from 32kW to >110kW



If you are planning a new CT product, you can count on Spellman to have the generator platform you need. From value to premium segment solutions, our CT generators are field proven to provide the highest reliability and image quality.

Spellman High Voltage has been designing and manufacturing CT generators for OEM customers for over three decades. We have unrivaled experience being the first provider of a CT generator used in a commercially available continuous rotating CT scanner in 1985. Since then Spellman has enhanced performance and developed new CT generators year after year, setting the standard for CT generator technology.

- **Rotational CT up to 0.25s**
- **Designed to drive all industry standard CT tubes**
- **Digital interface allows for ease of integration**
- **mA modulator**
- **Complete Integrated Imaging Solutions available**

## The Spellman family of CT generators

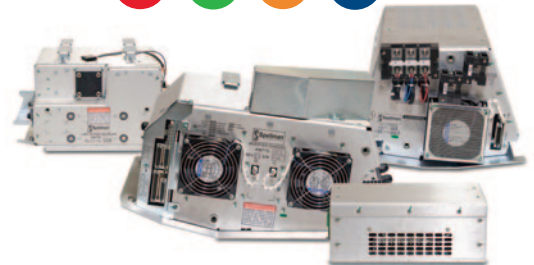
32/42/50kW 16-64 slice  
single chassis CT generator



50kW/80kW 16-128 slice CT  
generator with grid/Z deflection



110kW 64-256 slice CT generator  
for state of the art CT systems



**Z/X** DEFLECTION GRID

**AEG** ANODE END GROUNDED

**CO** CUT OFF GRID

**DE** DUAL ENERGY

# SPECIFICATIONS



MODEL	32/42/50kW Compact CT Generator	50/80kW CT Generator	110 kW CT Generator
Model Designation	CCT70PN32 CCT70PN42 CCT70PN50	CT70PN50 CT70PN80	CT140N110
Input Power	400Vac, 3Ø, +15%/-20%, 50/60Hz		
Auxiliary Input Power	220/230Vac, 1Ø +15%/-10%, 50/60Hz	220/230Vac, 1Ø +15%/-10%, 50/60Hz	Not required
kV Output Range	60kV - 140kV (bipolar, 30kV – 70kV)	60kV - 140kV (bipolar, 30kV – 70kV)	60kV to 140kV Anode grounded
kV Output Accuracy	±0.5% of setting		
mA Output Range	10mA – 300mA / 32kW maximum 10mA – 350mA / 42kW maximum 10mA – 360mA / 50kW maximum	10mA – 420mA / 50kW maximum 10mA – 667mA / 80kW maximum	6mA to 900mA, 110kW maximum
mA Regulation/Accuracy	2% or 2mA or which is larger for 20mA -350mA	2% or 1mA or which is larger for 20mA -420mA	2% or 1mA or which is larger for 20mA -900mA
Filament Output	2 outputs: 15Vac @ 0-6A up to 8A available	1 output: 15Vac @ 0-6A, up to 15A available 2 filament/no grid configuration available	2 outputs: 10Vac @ 0-8A,
Filament Accuracy	±5% of setting	±5% of setting	±2% from 25% to 75%, 5% above
Filament Repeatability	±0.2%		
Starter	HSS configured to match X-Ray tube used		
Interface	Custom serial interface		
Rotation	0.5 seconds	0.5 seconds	0.25 seconds
Configuration	Single chassis	Two chassis	Four chassis
Grid Option	Dual grid/single filament, 0-4kV @ 0-4kHz (separate assembly)	Dual grid/single filament, 0-4kV @ 0-4kHz (built-in)	n/a
Magnetic Z Deflection Option	n/a	Ground based single channel beam steering	n/a

Please consult factory regarding product configuration availability and regulatory requirements for specific markets

## *Let us simplify your production process by providing a complete Integrated Imaging Solution*

- All components undergo quality control and verification inspection by Spellman engineers
- All components are tested individually
- Components are then integrated and calibrated as part of a complete Imaging Solution
- Shipped as one complete Integrated Imaging Solution to customer for installation
- One point of contact for all product support needs

