



Spellman's new DGM935 high voltage power supply for Image Intensifier applications continues to set the standards for high voltage power conversion technology. The DGM series can be adapted to suit specific requirements with a wide selection of multiple output voltages and power capabilities in a compact package, making it perfect for the OEM user.

Monitoring of all output voltages is possible via local test points. The unit can operate in four modes selectable via three inputs. The output voltages are independently adjustable in each mode by the pre-set potentiometer located on the front of the unit.

## TYPICAL APPLICATIONS

- Radiology
- Cardiology
- Neuroradiology
- Night Surveillance
- Non Destructive X-Ray Inspection
- Image Intensifiers

## SPECIFICATIONS

### Input Voltage:

+24Vdc  $\pm 1\%$

### Input Current:

500mA maximum

### Output Voltages:

#### Anode:

Output Voltage: 30kV

Output Current: 30 $\mu$ A

#### Electrode 1:

Output Voltage: 50V to 300V

Output Current: 0 to 1 $\mu$ A

#### Electrode 2:

Output Voltage: 300V to 2kV

Output Current: 0 to 1 $\mu$ A

#### Electrode 3:

Output Voltage: 2kV to 18kV

Output Current: 0 to 18 $\mu$ A

- **Multiple Outputs**
- **Simple Interface Via Three Control Inputs**
- **Pre set Adjustment of Output Voltages in Four Mode Operation**

### Ripple:

<0.3%

### Temperature Coefficient:

<200ppmK<sup>-1</sup>

### Stability:

<0.3% over 8 hrs

### Temperature:

Operating: +5°C to +55°C

### Input:

8 pin header

### Dimensions:

6.30"H x 5.51"W x 1.93"D (160mm x 140mm x 49mm)

### Weight:

2.86 lb. (1.5kg)

### Regulatory Approvals:

Compliant to EEC EMC Directive. Compliant to EEC Low Voltage Directive. Compliant to IEC 60601-1. UL/CUL recognized, File E242588. RoHS Compliant.

## INPUT/OUTPUT CONNECTORS

### Test Point Terminals:

Wire type suitable for clip on probe.

### Output Terminals (0V, OVP and GND):

6.3mm Fast-on connector and M4 x 12mm stud

### Output Connector Anode:

M14 X 1 thread, 53mm deep x 8.5mm internal diameter.

### Output Connector (electrodes 1 & 2):

5/16 x 32 UNF thread, 26.5mm deep x 5mm internal diameter.

### Inputs PC and G:

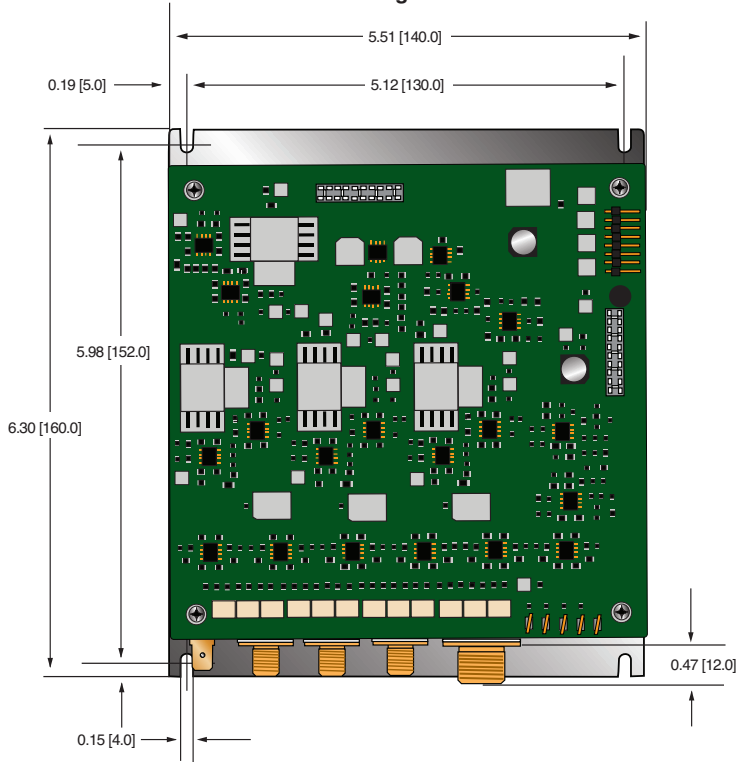
6.3mm Fast-on connector

Note: 0V, OVP and GND are all connected together internally.

All outputs are protected against high voltage breakdown in the user's equipment and short-circuit protected.

DIMENSIONS: in.[mm]

**TOP VIEW  
(A)  
Configuration**

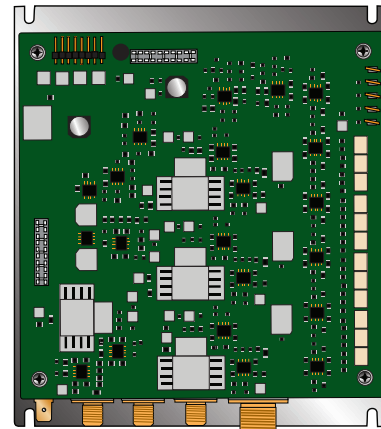


### INPUT 8 PIN HEADER

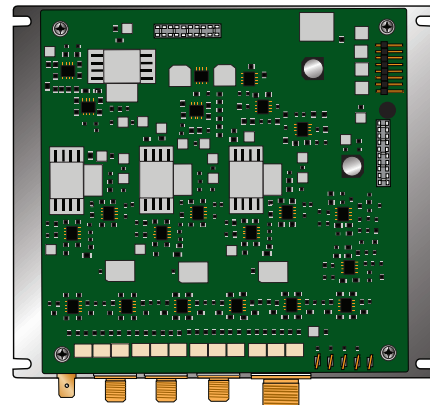
PIN	SIGNAL	SIGNAL PARAMETERS
1	24V	Power Input
2	0V	Power Ground
3	0V	Power Ground
4	24V	Linked internally to pin1
5	M2	Mode select input 2
6	M1	Mode select input 1
7	N/C	N/C
8	M3	Mode select input 3

### ALTERNATE CONFIGURATIONS AVAILABLE (Specify at time of order)

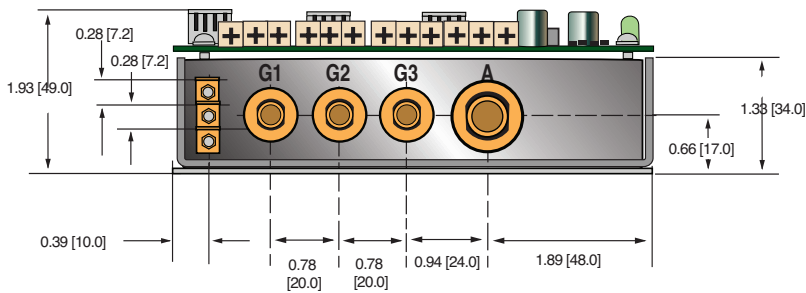
**(B)  
Configuration**



**(C)  
Configuration**



**FRONT VIEW**



**SIDE VIEW**

